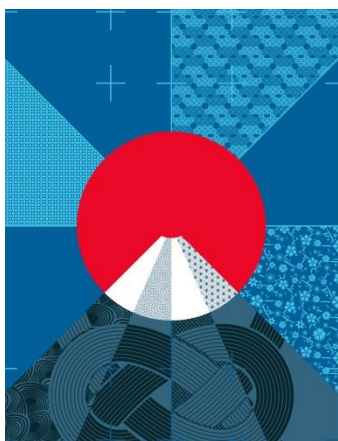




# RUGBY WORLD CUP™ JAPAN 日本 2019

TM © Rugby World Cup Limited 2015

## IWATE · KAMAISHI



**Venue:** Kamaishi Recovery Memorial Stadium  
(Provisional Name)

Scheduled for completion in Summer 2018



# The Beginning of a New Era of Rugby in Kamaishi

*Autumn 2019 - eyes around the world will be looking to the islands of Japan and Kamaishi in southern Iwate Prefecture.*

Held once every four years, The Rugby World Cup™ (RWC) is the crowning event of the sport of rugby union. Players around the world dream of someday reaching this stage, the pinnacle of rugby. The 2019 Japan tournament will mark the first time the RWC is held in Asia.

Matches will be hosted by every region across the country, including Kamaishi City on the southern coast of Iwate Prefecture. This will be an amazing chance for the nation to join athletes and fans from around the world as they watch the tournament.

The Rugby World Cup™.

A thrilling competition between 20 teams with each player's pride on the line.

A battle of top-class technique and speed that will get your heart racing.

Join the scrum in Kamaishi in 2019.



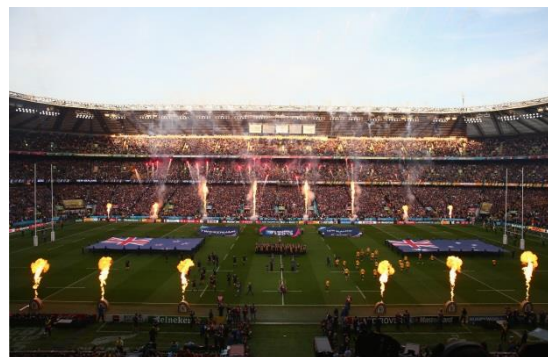
## Overview of the Rugby World Cup 2019™

### Crowning the *Champions* of Rugby

The Rugby World Cup™ is the pinnacle of world rugby, and the **third largest international sporting event** after the Olympics and the FIFA World Cup.

- **Tournament Period** 20 September (Fri) to 2 November (Sat), 2019
- **Participating Teams** 20
- **Matches** 48
- **Host Cities** 12 cities across Japan

**Kamaishi (Iwate Pref.)** / Sapporo (Hokkaido Pref.) / Kumagaya (Saitama Pref.) / Tokyo / Yokohama (Kanagawa Pref.) / Shizuoka Prefecture / Toyota (Aichi Pref.) / Higashi-Osaka (Osaka Pref.) / Kobe (Hyogo Pref.) / Fukuoka (Fukuoka Pref.) / Kumamoto (Kumamoto Pref.) / Oita Prefecture



## Kamaishi **Recovery** Memorial Stadium (Provisional Name)



- **Name** Kamaishi Recovery Memorial Stadium (*provisional name*)
- **Capacity** Approx. 16,000 seats (*6,000 permanent, 10,000 temporary*)
- **Location** Unosumai Recreation Park (*Kamaishi City, Iwate Prefecture*)

The tsunami of 2011 wrought devastation on the coast of Japan, but in the **Unosumai area** of Kamaishi, around 600 students from the local elementary and junior high school held hands as they made it safely to high ground. This has made Unosumai **a symbol of disaster resilience** that has attracted the world's attention.

# The **Significance** of the Rugby World Cup™ in Kamaishi

The only host venue in a city affected by the **2011 Great East Japan Earthquake and Tsunami**.

Kamaishi City is known as the City of Fish and Nature, the Birthplace of the Modern Steel Industry, and as the **City of Rugby**.

After boasting a population of nearly 100,000 in the 1960s, changes in local industry have led to a drop in Kamaishi's population. The Great East Japan Earthquake and Tsunami also struck another blow to this decline. However, the Rugby World Cup 2019™ will pass new legacies on to the next generation, and lead to the next stage in the region's development.



## The Significance of the Rugby World Cup 2019™ in Kamaishi

- ◆ Show our gratitude for the world's support and show off a recovered Kamaishi
- ◆ Rebuild and revitalize the region through the "power of sports"

## The Lead-up to Kamaishi's **Selection** as Official Host City

It's all thanks to the dedication of the citizens of the **City of Rugby**

<b>2009 July</b>	The International Rugby Board of Directors chooses Japan to host the Rugby World Cup 2019
<b>2011 March</b>	The Great East Japan Earthquake and Tsunami
<b>December</b>	A Kamaishi RWC 2019 Discussion Meeting is held by interested citizens
	The RWC 2019 host city bid is included in the Kamaishi City Reconstruction Master Plan
<b>2012 July</b>	The RWC Bid Promotion Office is established within the Sports Promotion Division of the Kamaishi City Board of Education Office
<b>2013 October</b>	Japan Rugby Association Chairman Yoshiro Mori attends a game of the local Kamaishi Seawaves team and takes a tour of the city
<b>2014 May</b>	City volunteers launch the RWC 2019 Kamaishi Host City Bid Committee
<b>June</b>	The RWC 2019 Kamaishi Host City Bid Committee requests the endorsement of the Mayor
<b>July</b>	Kamaishi City announces that it has nominated itself as a host city candidate
<b>October</b>	Iwate Prefecture and Kamaishi City submit a joint Host City application to the Organizing Committee
<b>2015 March</b>	Kamaishi City is officially chosen as one of the 12 national host cities.

## **Kamaishi** and Rugby

The **Northern Iron Men** left their footprints all over this town



The Nippon Steel Rugby Football Club (often called the Northern Iron Men) left a huge mark on the history of Japan Rugby with eight national championship wins, including seven consecutive trophies between 1979 and 1985. Without a single university forward player, the team consisted mostly of athletes who had been no-name players during their high school days. The people of northern Japan are often called tenacious, and the Northern Iron Men certainly possessed tenacity in spades. They also had the entire community behind them showing their enthusiasm for this great endeavor.

Continuing on in the footsteps of the Northern Iron Men, a new team called the Kamaishi Seawaves RFC was formed on April 25, 2001. The Kamaishi Seawaves hope to develop as a club with strong ties to the region, and aim to help promote rugby within Kamaishi, Iwate and northern Japan as a whole.

The tradition of using flags from local fishing boats to cheer on the team has been going strong since the Nippon Steel Rugby Club era. Thanks to the Northern Iron Men, rugby is now a part of daily life in Kamaishi and at the core of the region's pride.



# IWATE · KAMAISHI Match Schedule

**25 September , 2019 (wed)**  
**14:15 Kick Off**



**FIJI**

**VS**



**AMERICAS 2**

The winner of the match between Canada and top-ranked South American team (excluding Argentina)  
(To be confirmed in 2018)



**13 October , 2019 (sun)**  
**12:15 Kick Off**



**AFRICA 1**

The winner of the Rugby Africa Championship  
(To be confirmed in 2018)

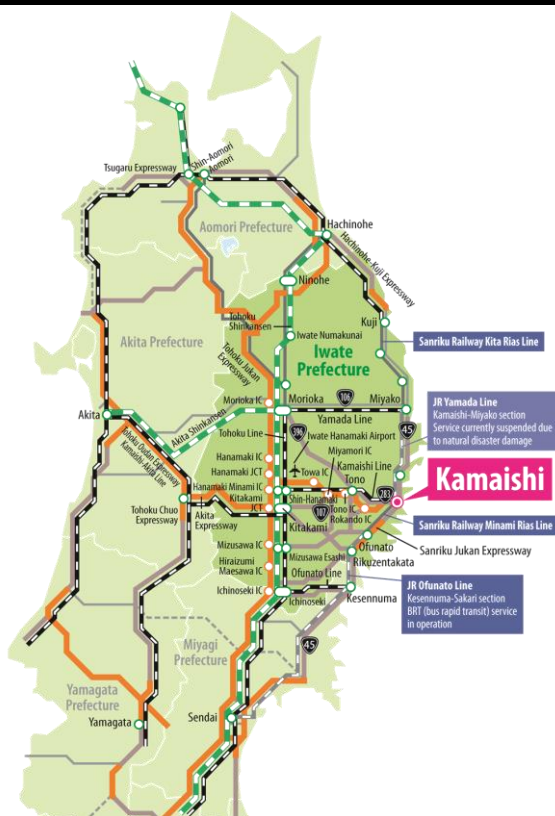
**VS**



**REPECHAGE WINNER**

The winner of the repechage tournament  
(To be confirmed in 2018)

## Access <IWATE · KAMAISHI>



■ Expressway	
Urawa IC	509km (390mins)
Sendai Miyagi IC	182km (140mins)
Akita Chuo IC	167km (130mins)
Hachinohe IC	189km (145mins)
Aomori IC	237km (180mins)
Tono IC	
■ Using National Highway 283	
Tono IC	40km (55mins)
■ Using the Expressway and National Highways 343 and 45	
Sendai Miyagi IC	88km (60mins)
Ichinoseki IC	61km (75mins)
Rikuzentakata	50km (60mins)
Kamaishi	
■ Using National Highways 106 and 45	
Morioka IC	94km (100mins)
Miyako	55km (85mins)
Kamaishi	
■ Using National Highways 396, 283 and 107	
Morioka	65km (70mins)
Hanamaki	46km (55mins)
Kitakami	48km (55mins)
Tono	38km (50mins)
Kamaishi	

■ Tohoku Shinkansen	
Tokyo	(Yamabiko 150mins)
Sendai	(Yamabiko 48mins)
Shin-Hanamaki	
■ Kamaishi Line	
Shin-Hanamaki	(Rapid (Kaisoku) 94mins)
Kamaishi	
■ Ofunato Line	
Ichinoseki	(120mins)
Kesennuma	(80mins)
Kamaishi	
■ Yamada Line	
Morioka	(Rapid (kaisoku)) (120mins)
Miyako	(70mins)
Kamaishi	
■ Airplane	
Sapporo	Shin-Chitose Airport – Iwate Hanamaki Airport (60mins)
Nagoya	Komaki Airport – Iwate Hanamaki Airport (70mins)
Osaka	Itami Airport – Iwate Hanamaki Airport (85mins)
Fukuoka	Fukuoka Airport – Iwate Hanamaki Airport (120mins)
Iwate Hanamaki Airport	

\* Distances and journey times are estimates.  
\* The Kamaishi Expressway will be completely open from Kamaishi to Tono from 2018 shortening the journey time by 25mins.  
\* The Sanriku Coastal Road will be open from Rikuzentakata to Tono from 2018 shortening the journey time by 40mins.  
\* There are sections of the JR lines where service is still suspended due to damage from the Great East Japan Earthquake. Please check in advance.

## Rugby World Cup 2019™ JAPAN - Tournament Vision Connect – Create – Go Forward

Connecting people in Japan, Asia, and around the world to  
create a groundbreaking and inclusive celebration of  
**Rugby and Community.**

We will go forward as one, to build a better future for all.